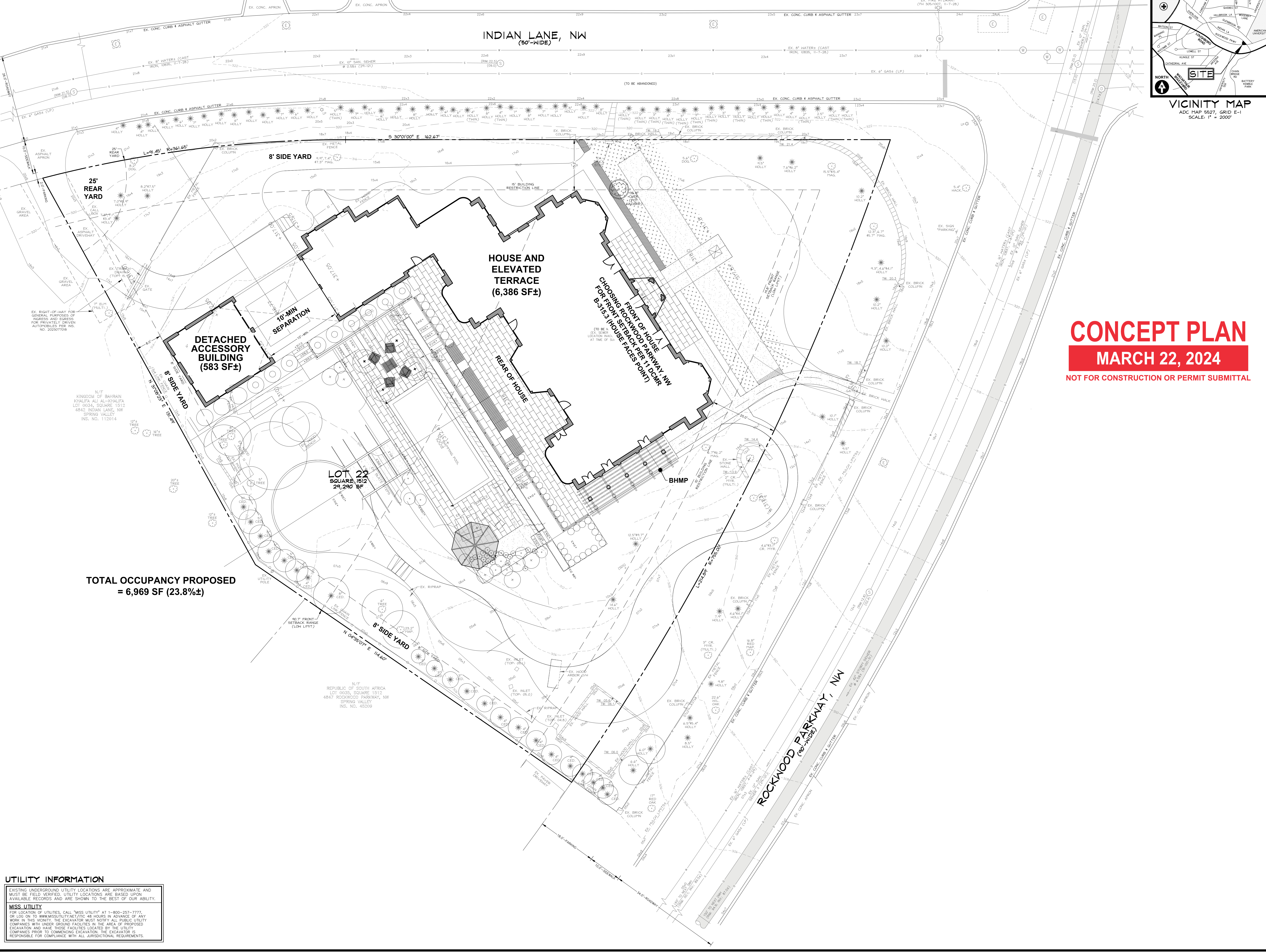


**GENERAL NOTES**

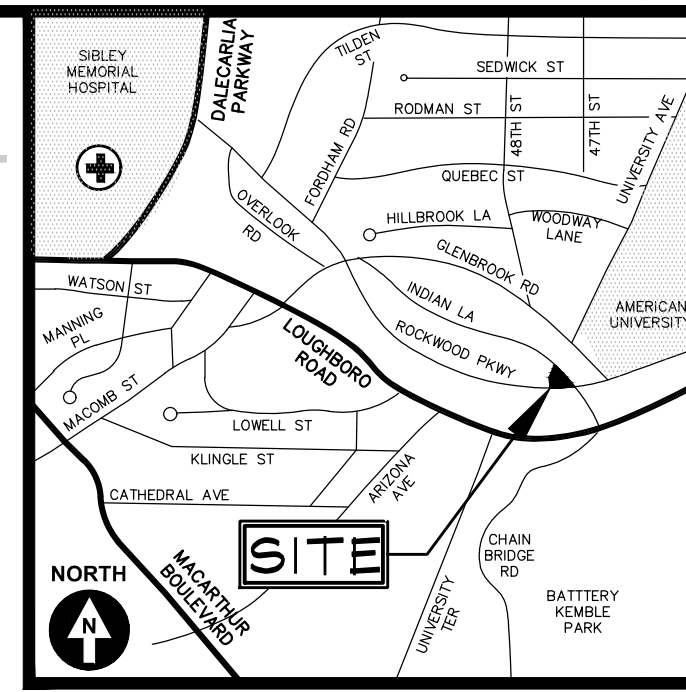
SEE GENERAL NOTES ON SHEET 01001



**CONCEPT PLAN**  
**MARCH 22, 2024**  
 NOT FOR CONSTRUCTION OR PERMIT SUBMITTAL

**TOTAL OCCUPANCY PROPOSED**  
 = 6,969 SF (23.8%±)

**UTILITY INFORMATION**  
 EXISTING UNDERGROUND UTILITY LOCATIONS ARE APPROXIMATE AND MUST BE FIELD VERIFIED. UTILITY LOCATIONS ARE BASED UPON AVAILABLE RECORDS AND ARE SHOWN TO THE BEST OF OUR ABILITY.  
**MISS UTILITY**  
 FOR LOCATION OF UTILITIES, CALL "MISS UTILITY" AT 1-800-257-7777, OR LOG ON TO WWW.MISSUTILITY.NET/TIC 48 HOURS IN ADVANCE OF ANY WORK IN THIS VICINITY. THE EXCAVATOR MUST NOTIFY ALL PUBLIC UTILITY COMPANIES WITH UNDERGROUND FACILITIES IN THE AREA OF PROPOSED EXCAVATION AND HAVE THOSE FACILITIES LOCATED BY THE UTILITY COMPANIES PRIOR TO COMMENCING EXCAVATION. THE EXCAVATOR IS RESPONSIBLE FOR COMPLIANCE WITH ALL JURISDICTIONAL REQUIREMENTS.



**VICINITY MAP**  
 ADC MAP 5527, GRID E-1  
 SCALE: 1" = 2000'

**CAS**  
 ENGINEERING-DC, LLC  
 Experience you can build on.  
 CAS ENGINEERING-DC, LLC  
 4836 MacArthur Boulevard, NW  
 2nd Floor  
 Washington, DC 20007  
 (202) 393-7200 Phone  
 www.cas-dc.com  
 info@cas-dc.com  
 CIVIL • SURVEYING • LAND PLANNING

**OWNER/CLIENT**  
 ROCKWOOD PROJECT LLC  
 4833 ROCKWOOD PARKWAY, NW  
 WASHINGTON, DC 20016

**ARCHITECT**  
 THORSON & COOKE ARCHITECTS  
 5158 MACARTHUR BOULEVARD, NW  
 WASHINGTON, DC 20016  
 (202) 686-4563 (PHONE)

**LOT 0022, SQUARE 1512**  
 SPRING VALLEY

**4833 ROCKWOOD**  
**PARKWAY, NW**

N.W. WASHINGTON,  
 DISTRICT OF COLUMBIA

REVISION	DATE
CAS PROJECT	23-0509-DC
DATE	02/2024
DRAWN BY	MSL
CHECKED BY	DCL
APPROVAL	DCL
SCALE	1"=10'

REVISION	DATE
CAS PROJECT	23-0509-DC
DATE	02/2024
DRAWN BY	MSL
CHECKED BY	DCL
APPROVAL	DCL
SCALE	1"=10'

**CONCEPTUAL**  
**SITE PLAN**

**CIV200**