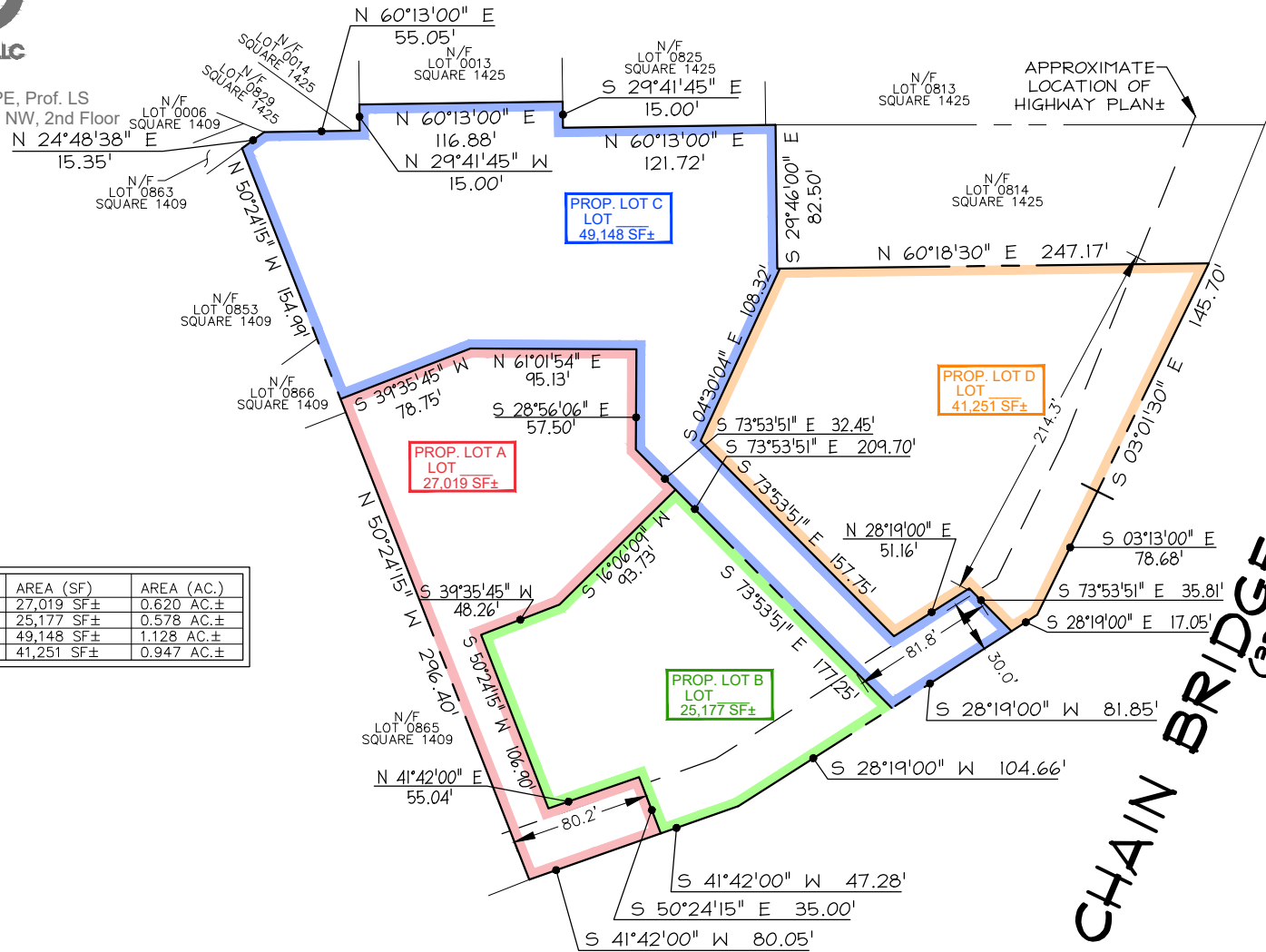


# PROPOSED A&T LOTS



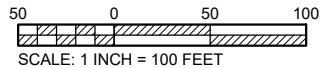
CAS Engineering-DC, LLC  
 Attn: David C. Landsman, PE, Prof. LS  
 4836 MacArthur Boulevard, NW, 2nd Floor  
 Washington, DC 20007  
 (202) 393-7200 phone  
 info@cas-dc.com

LOT	AREA (SF)	AREA (AC.)
A	27,019 SF±	0.620 AC.±
B	25,177 SF±	0.578 AC.±
C	49,148 SF±	1.128 AC.±
D	41,251 SF±	0.947 AC.±



**CHAIN BRIDGE ROAD, NW**  
 (33'-WIDE)

APPROXIMATE LOCATION OF HIGHWAY PLAN±



**2750-2762 Chain Bridge Road, NW**  
**Proposed A&T Lots "A" thru "D"**  
**Lots 0841-0847, Square 1425**

THIS SKETCH WAS PREPARED BASED OFF OF AVAILABLE RECORDS AND IS NOT REFLECTIVE OF AN ACTUAL FIELD SURVEY.